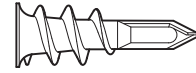


WARNING

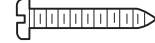
To reduce the risk of SEVERE INJURY or DEATH:

- DO NOT alter the plug.
- Light is intended for indoor ceiling or wall mount applications ONLY.

Hardware Provided



Wall Anchor (screw-in) (2)



Screw # 6G x 25mm (2)

NOTE: The Remote Control supplied with your Remote LED Light is preprogrammed by the factory to the button shown in figure 1.

Installation

The myQ[®] Remote LED Light is designed to plug directly into a standard 240V outlet and not permanently wired. Consider installing close to an existing power outlet. Nominal lumens is 1500, avoid directly looking at the lens when illuminated.

NOTE: If installing light on lasterboard and a ceiling joist cannot be located, use wall anchors provided. No pilot hole is required for wall anchors.

1. Drill pilot holes 6-1/8" (15.6 cm) apart if mounting to joist. OR Screw in wall anchors 6-1/8" (15.6 cm) apart if mounting to lasterboard.
2. Determine the length of power cord needed to reach the nearest 240V outlet. Wind any excess cord around cord retainer on the top side of the light base. Route the cord through the channel so the light mounts flush.
3. Open the light lens.
4. Mount the light with the screws provided.
5. Close the light lens.
6. Plug in the light to the 240V outlet.

NOTE: The LED light is very bright and will blink while programming. DO NOT stare at the light while on a ladder.

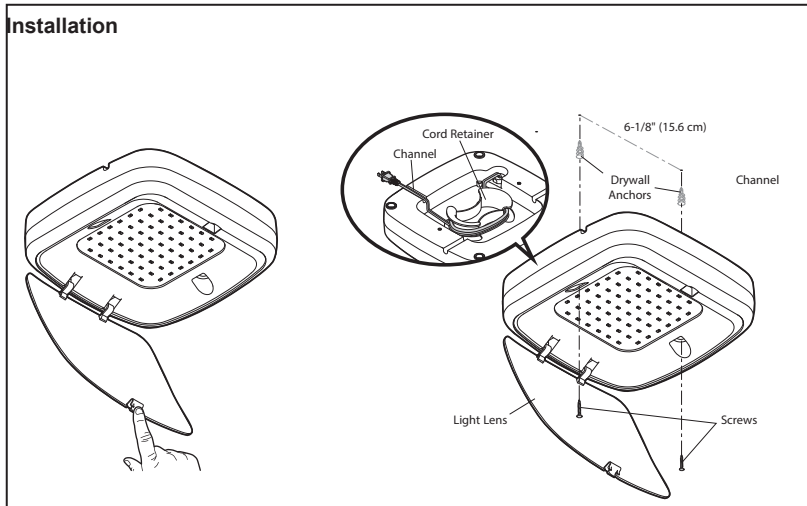
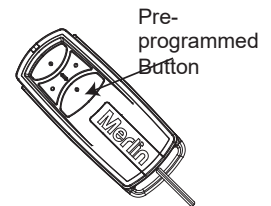


Figure 1



WARNING! This product contains a button/coin cell battery.

- The battery is hazardous.
- Keep new and used batteries away from children.
- Do not ingest battery. Chemical burn hazard.
- If the coin cell battery is swallowed or placed inside any part of the body, it can cause severe or fatal injuries in 2 hours or less.
- If the battery compartment does not close securely, stop using the product and keep away from children.
- If you think batteries might have been swallowed or placed inside any part of the body, call the 24-hour Poisons Information Centre on 13 11 26 in Australia, or the 24-hour National Poisons Centre on 0800 764 766 in New Zealand, or seek immediate medical attention.
- Dispose of used coin/button cell batteries immediately and safely. Flat batteries can still be dangerous.



Operation

Once the mains power is turned ON, the light can only be activated using Security+2.0 Remote Controls or the Merlin myQ[®] Internet app. A Security+ 2.0 Remote Control is supplied with this kit.

If paired with a myQ[®] garage door opener the myQ[®] Remote LED Light can also automatically turn ON or OFF in simultaneously with the garage door opener's internal light to boost the illumination of the garage.

NOTE: Wireless Wall Controls will not operate this device.

App Store is a service mark of Apple Inc. Google Play and the Google Play logo are require an additional accessory purchase or subscription fee.

Apple, the Apple logo, iPhone, and iPad are trademarks of Apple Inc.,

Programming

PROGRAM AN ADDITIONAL SECURITY+ 2.0® REMOTE CONTROL TO THE myQ® REMOTE LED LIGHT

1. Press the LEARN button on the Remote LED Light until the green LED comes ON.
2. Press the button on the remote control (figure 2) that you wish to operate the light.
3. The code has been programmed when the Remote LED Light blinks once.

PROGRAM THE myQ® REMOTE LED LIGHT TO A myQ® COMPATIBLE GARAGE DOOR OPENER

1. Press the LEARN button on the Remote LED Light until the green LED comes ON.
2. Press the “S” (figure 3 - Roller Door Garage Door Openers) or “Learn” (figure 4 - Sectional Garage Door Openers) button on the myQ® garage door opener that you wish to operate the light.
3. The code has been programmed when the remote light blinks once.

Figure 2

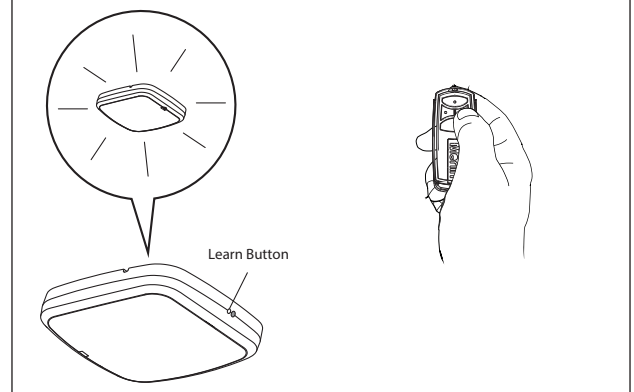


Figure 3

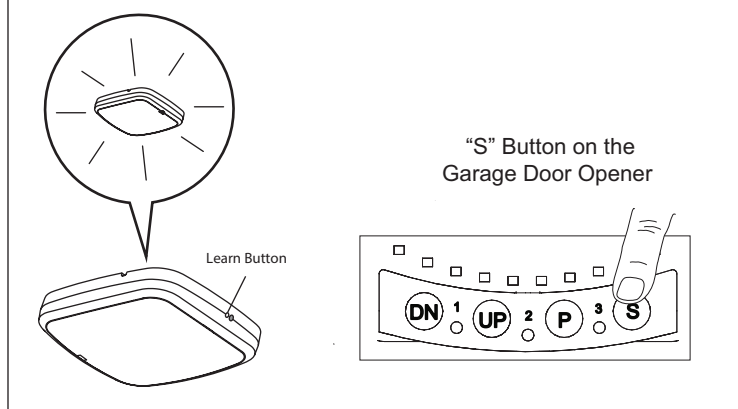
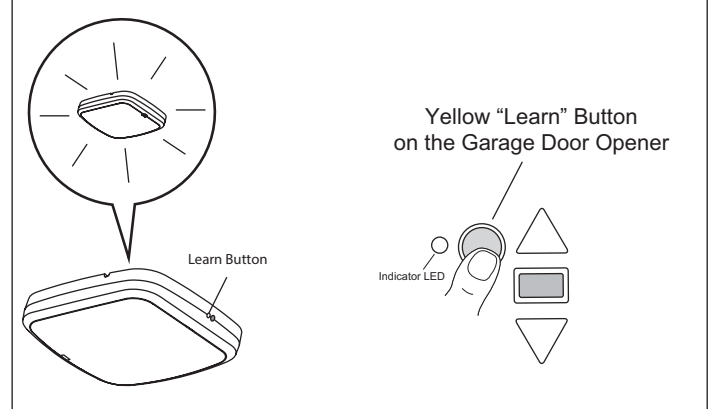


Figure 4



ADD THE myQ® REMOTE LED LIGHT TO myQ® ACCOUNT

Up to 16 myQ® devices can be paired to the myQ® Gateway. These devices include any combination of myQ® garage door openers and myQ® Remote LED Lights.

NOTE: An active myQ® account with a connected myQ® Gateway is required for activating the myQ® feature. A myQ® Gateway is not provided with this unit.

1. Login to the myQ® app
2. Press the menu icon (top left corner).
3. Click on Device Management.
4. Under “HUBS”, click on the name of your Gateway.
5. Click “Add New”, select LED Remote Light and follow the steps.
6. Press the LEARN button on the light until the green LED comes ON.

TO ERASE ALL PROGRAMMING FROM THE myQ® REMOTE LED LIGHT

1. Press and hold the LEARN button until the green LED turns off (6-10 seconds). All programming is now erased.

Maintenance

- Unplug the light before cleaning.
- Use a lightly dampened cloth for cleaning.
- DO NOT use liquid cleaners on the light lens.

Chamberlain Australia Pty Ltd
PO Box 1446
Lane Cove NSW 1595
gomerlin.com.au
Ph: 1800 638 234

Chamberlain New Zealand Ltd
PO Box 100-221
AUCKLAND 0745
gomerlin.co.nz
Ph: 0800 653 667

